

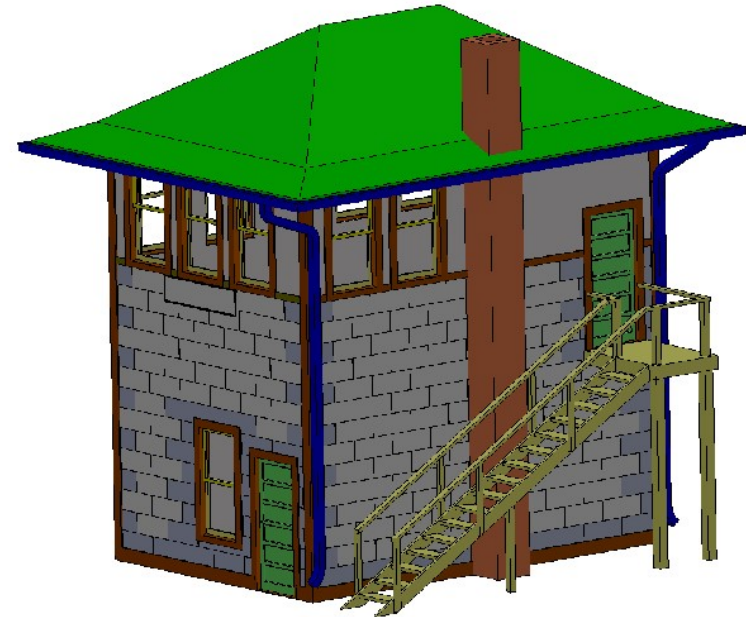
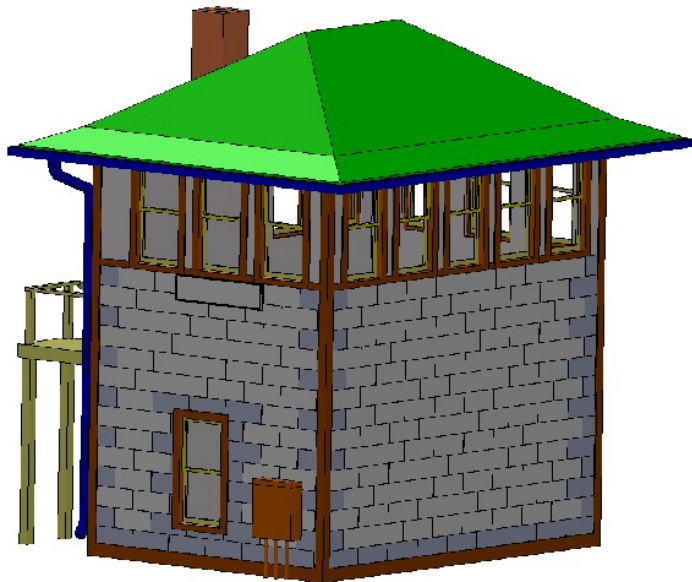
CN Bayview Tower

Bayview Tower was located at the intersection of CN's Dundas, Oakville and Mimico Subs near the city of Hamilton Ontario.

The tower was originally of all-wood construction, but at some time, later in its life, it was sheathed with tiles, likely made from asbestos. These tiles covered the sides up to the beltline. Above this, the sides were covered in some kind of stucco, likely of asbestos too.

The present drawing was made based on a sketch by the late Frank Dubery. The sketch lacked two of the primary views and these were constructed from photographs.

The tower was removed by 1960 after the installation of CTC in the area.

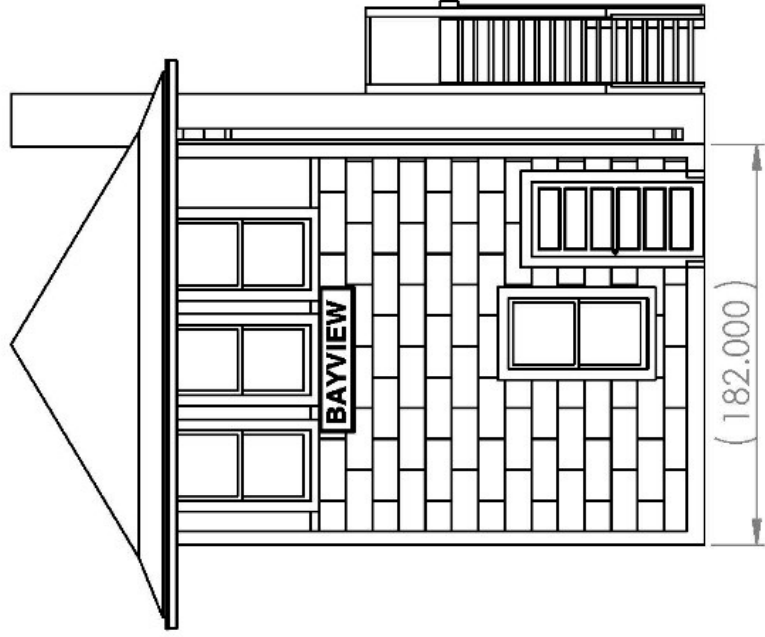


The font on the letterboard is slightly heavy. If one wants a better approximation, one could consult the photo in Ian Wilson's "*Steam Through London*" page 15 to use as a guide.

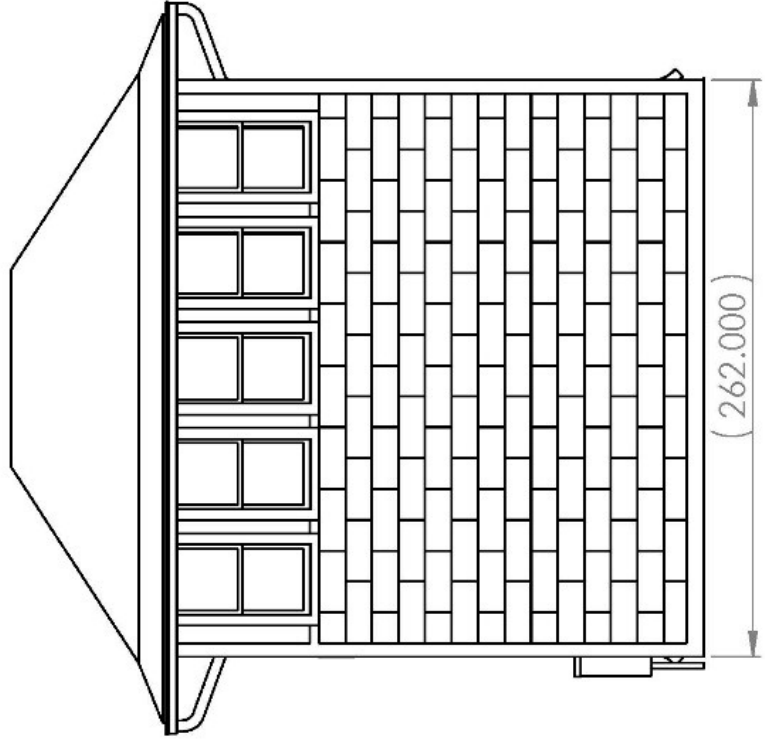
The colours in the 3D illustrations are to help identify the various parts. See the drawing for actual colours.

If one wants to build a model of the tower, .stl files, in HO are available for 3D printing of the windows and doors.

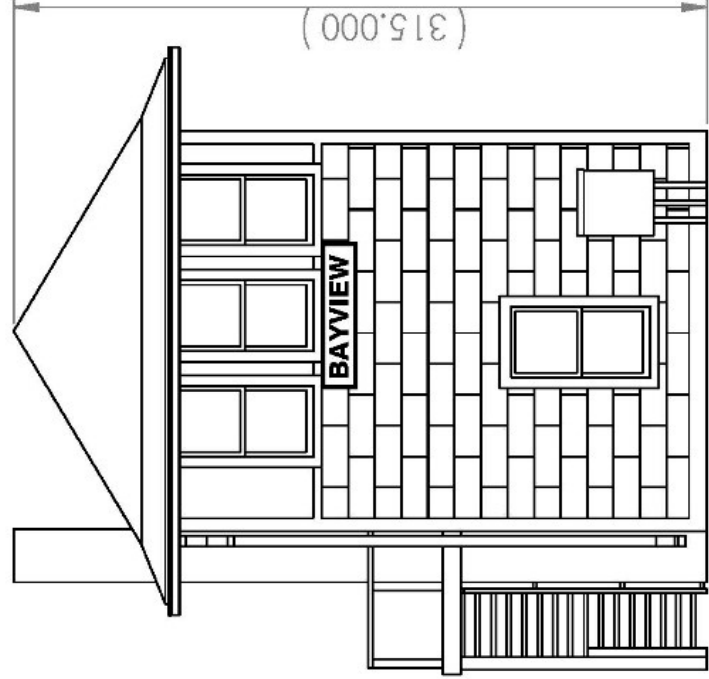
For more information, contact Al Welch at acwelch@worldline.ca.



SOUTH
(182.000)

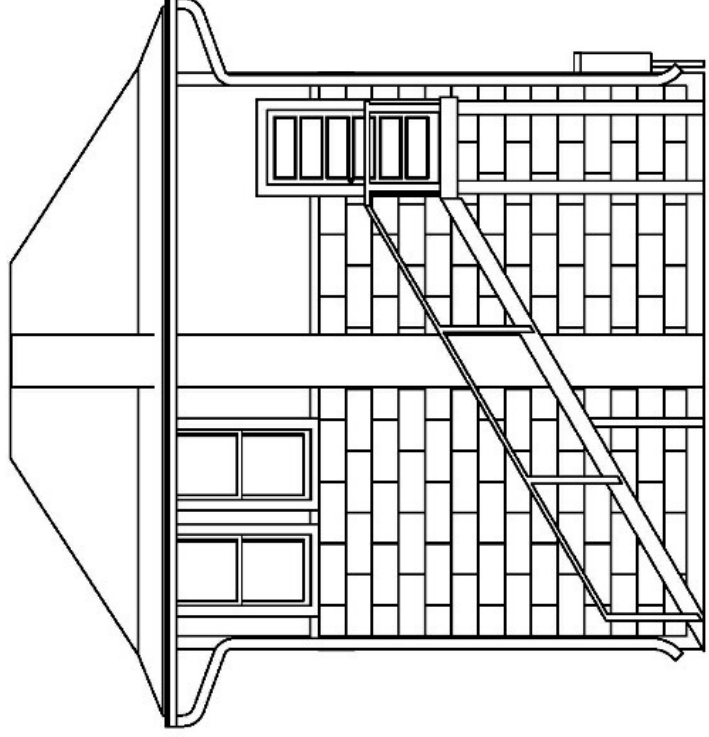


WEST
(262.000)



(315.000)

NORTH



EAST
(315.000)

BAYVIEW CONTROL TOWER

NOTES:

1. DRAWING IS IN HO SCALE.
2. TO ADJUST PLAN FOR OTHER SCALES MULTIPLY HO DIMENSION BY :
O SCALE=1.814, S SCALE=1.36, AND N SCALE=0.544
3. COLOURS AS FOLLOWS: ROOF=BLACK (SHINGLES), TRIM=DARK BROWN, SIDE PANELS=LIGHT GRAY (PROBABLY ASBESTOES TILES), SPACES ABOVE BELTLINE=LIGHT GRAY (POSSIBLY STUCCO FROM ASBESTOES FIBRE), CHIMNEY=BROWN.
4. DRAWING PORTRAYS 1950s APPEARANCE.
5. DIMENSIONS IN BRACKETS ARE IN PROTOTYPE INCHES.